

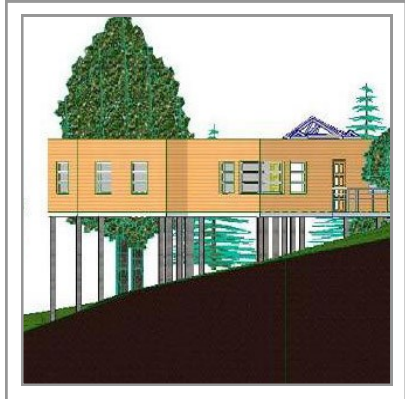


AK DESIGN PARTNERSHIP LLP
CEME Innovation Centre
CEME Campus
Marsh Way
Rainham
RM13 8EU

St Nicholas School South London

Preparation of working drawings and details from client's design for an educational facility for 12 'Special Education Needs' pupils and 7 staff, which is a stand alone self sufficient building with green roof, robust construction with external timber cladding.

Contract Value: £1.5m
 Contract Duration: 30 weeks



Chartered Building Consultancy

We are registered with Constructionline (Registration No 63056) for a full range of Building Design, Building Surveying, Computer Aided Design and miscellaneous construction related professional disciplines.

tel: 0208 596 707

email: office@akdesign.co.uk

web: www.akdesign.co.uk